

BASF Construction Chemicals Seven Hills site Joint repair for busy driveway

Project:

Joint repair

Location:

Seven Hills, BASF site

Project completed:

August 2016

Applicator/Contractor:

CP Applicators

Market sector:

Sealants

Products used & amounts:

MasterSeal® CR 435 3L

Sales contact:

Colin Peterson



Photo: The repaired joint outside BASF Seven Hills warehouse driveway

The background

A joint between two slabs (one sloping) had opened up over time and the joint had become contaminated with dirt and debris. The exposed edges of the joint were showing signs of damage. The immediate needs were to stop further deterioration and seal the joint.

The challenge

The affected driveway is in use from morning to night and there is little availability to stop the passage of trucks and forklifts. The joint needed to be resealed during working hours and not disrupt the activities on site. The material needed to be suitable for the abrasion of all types of vehicles including cars, utility vehicles, delivery vans, B doubles and hard wheeled forklift traffic.

Contact:

Colin Peterson

BASF Construction Chemicals, 13 Stanton Road, Seven Hills NSW 2147

Tel: +612 88114242

Email: colin.peterson@basf.com

www.master-builders-solutions.basf.com.au

BASF Construction Chemicals Seven Hills site

Joint repair for busy driveway

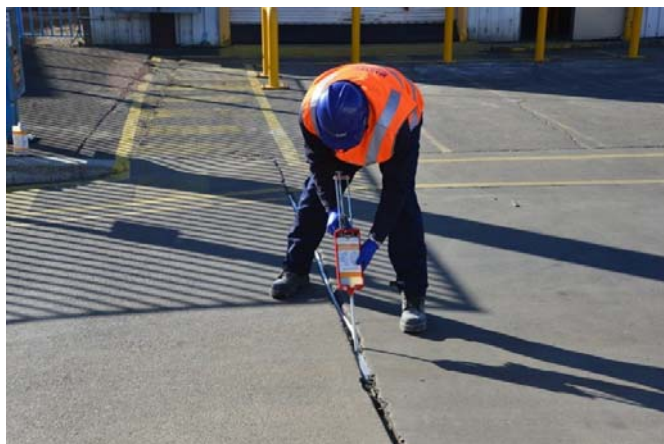


Photo: Joint sealant is applied to the cleaned joint after backer rod application



Photo: Traffic moved over the joint within 15 minutes of application

Our solution

The **MasterSeal CR 435** joint sealant has some unique characteristics that made it perfect for this application. It has high Shore A hardness making it abrasion resistant. It has fast cure allowing return to service in minutes, rather than hours or days. It is self priming so minimal preparation was required. All that was needed was to clean the joint and install a backer rod to give the right joint thickness. This allows the joint sealant to move with the expansion and contraction of the slabs.

The customer's benefit

- Shore A hardness of 80MPa – giving long term durability and abrasion resistance.
- Gel time of approximately 4 minutes – fast hardening allowing for return to service within 15 minutes, almost no disruption to normal operations.
- Twin cartridge – part used cartridges can be kept for the next job. Only the static mixer was discarded- no wastage.
- Concrete grey colour of the cured sealant – blends in with the concrete.
- UV stable – suitable for internal and external use. Sealant will not crack or disintegrate under exposure.

Projects facts at a glance

- Movement joint needed repair without stopping traffic.
- Trucks and forklifts crossing the joint in less than 15 minutes of the application
- Minimum joint preparation required.

Master Builders Solutions from BASF

The Master Builders Solutions brand brings all of BASF's expertise together to create chemical solutions for new construction, maintenance, repair and renovation of structures. Master Builders Solutions is built on the experience gained from more than a century in the construction industry.

The know-how and experience of a global community of BASF construction experts form the core of Master Builders Solutions. We combine the right elements from our portfolio to solve your specific construction challenges. We collaborate across areas of expertise and regions and draw on the experience gained from countless construction projects worldwide. We leverage global BASF technologies, as well as our in-depth knowledge of local building needs, to develop innovations that help make you more successful and drive sustainable construction.

The comprehensive portfolio under the Master Builders Solutions brand encompasses concrete admixtures, cement additives, chemical solutions for underground construction, waterproofing solutions, sealants, concrete repair & protection solutions, performance grouts, performance flooring solutions.