

# MasterTile® WP 668

**Waterproof, flexible protective coating for use under all tile and natural stone coverings in internal wet areas**

## DESCRIPTION

**MasterTile WP 668** is a single part acrylic resin based waterproofing, that provides a flexible protective coating, beneath ceramic tile and natural stone installations in wet areas.

## APPLICATION

- Liquid area waterproofing to be applied by roller, brush or trowel.
- For indoor use.
- For walls and floors.
- For applications not covered under the official test certificates to ZDB leaflet "Bonded waterproofing" for use class A 0.
- Resistance class A1 in accordance with the test principles to issue an official test certificate.
- For wet areas such as bathrooms, showers in residential buildings, hotels, old people's homes and hospitals (not for use in permanently immersed / pressurized conditions).
- On moisture-sensitive, absorbent substrates, e.g. plasters, plaster slabs, gypsum fibre boards, plaster boards, wooden chipboards, anhydrite screeds in moist and wet areas subject to usual domestic use.
- On absorbent mineral substrates, e.g. concrete, screed, render, aerated concrete, cementitious levelling compounds for walls and self levelling compounds such as **MasterTop 528**.

## FEATURES AND BENEFITS

- Waterproof, protects moisture-sensitive substrates.
- Flexible, compensates tensions, deformations of the substrate, variations in temperature and vibrations.
- Crack-bridging, high security even with subsequent cracks in the substrate.
- Ready-to-use, easy to apply by roller, brush or trowel.
- Two-coloured, for easier visual control of the layer thickness.
- Resistant to lime water, ensures bonding between protective coating and mortar if the adhesive bed is constantly submerged in water.
- Solvent-free, no harmful risk to the environment, can be used without any risk to health.
- With official Test Certificate issued by the Technical University of Munich for interior waterproofing.

## PACKAGING

**MasterTile WP 668** is available in 25kg plastic pails.

## COLOURS

**MasterTile WP 668** is available in Red and Grey.

## TECHNICAL DATA – MATERIAL

Material base	solvent-free synthetic resin dispersion
Component	single component
Density	approx. 1.5g/cm <sup>3</sup>
Pull off strength ASTM D4541	>1.5N/mm <sup>2</sup> on concrete

# MasterTile<sup>®</sup> WP 668

## APPLICATION

Minimum consumption at required dry layer thickness of 0.5 mm Thickness of wet film (min. 2 layers)	approx. 1.1 to 1.2 kg/m <sup>2</sup> * ( $\cong$ approx. 0.8 litre / m <sup>2</sup> ) approx. 0.7 mm
Coverage	25 kg pail is sufficient for approx. 21.5 m <sup>2</sup>
Working temperature	+5°C to +40°C (substrate temperature)
Evaporation time after 1st coat**	approx. 1 hour
Evaporation time after 2nd coat** ready for subsequent tiling	approx. 1 to 2 hours

\* Consumption might increase with rough substrates.

\*\* At +23°C and 50% relative humidity. Higher temperatures reduce, lower temperatures increase the times given.

## PREPARATION OF SUBSTRATE

The substrate must be sound, dry (cement screed 4%, anhydrite pourable screed 0.5%, measured with the CM meter), clean and free from oil, grease and other residues which should be removed by sand-blasting, brushing or shotblasting (Blastrac) if necessary. The practically smooth surface must not have any

honeycombs, gaping cracks or ridges. Prime gypsum-based substrates and plaster boards beforehand with undiluted **MasterTile P 302**. Absorbent mineral substrates should be primed with **MasterTile P 302**, diluted 1 : 1 with water. The primers must have cured prior to the application of **MasterTile WP 668**.

# MasterTile® WP 668

## APPLICATION PROCEDURE

Apply undiluted **MasterTile WP 668** by roller (lambskin roller), brush (wall brush, float), or trowel to the substrate to cover the entire area. A minimum of two coats is required.

Place **MasterTile WP Tape** over pipe culverts and floor drains, in corner joints and floor/wall junctions press **MasterTile WP Tape** into the first coat of **MasterTile WP 668**. Any projecting edges of the fabric are covered by the second coat.

Any further coat is applied when the first coat is dry. For easier control of coverage it is recommended to apply the first coat with

**MasterTile WP 668** red and the following coat(s) with

**MasterTile WP 668** grey. If the previous colour is visible the thickness of the applied coat is too thin and should be avoided.

When **MasterTile WP 668** has cured tiles can be laid with the correct adhesive on vertical and horizontal areas. Calibrated natural stone should be laid with the relevant natural stone adhesive.



1. Priming: Prime absorbent mineral or gypsum-based substrates and plaster boards with **MasterTile P 302**.



4. Place **MasterTile WP Tape** over the pipe connection protruding from the wall and cover with **MasterTile WP 668** (red)



2. Apply undiluted **MasterTile WP 668** (red) to the substrate as a first protective coating to cover its entire surface.



5. After an evaporation time of approx. 1 hour apply the second protective coating with **MasterTile WP 668** (grey). The first coat of **MasterTile WP 668** (red) should not be visible, otherwise another layer might be necessary.



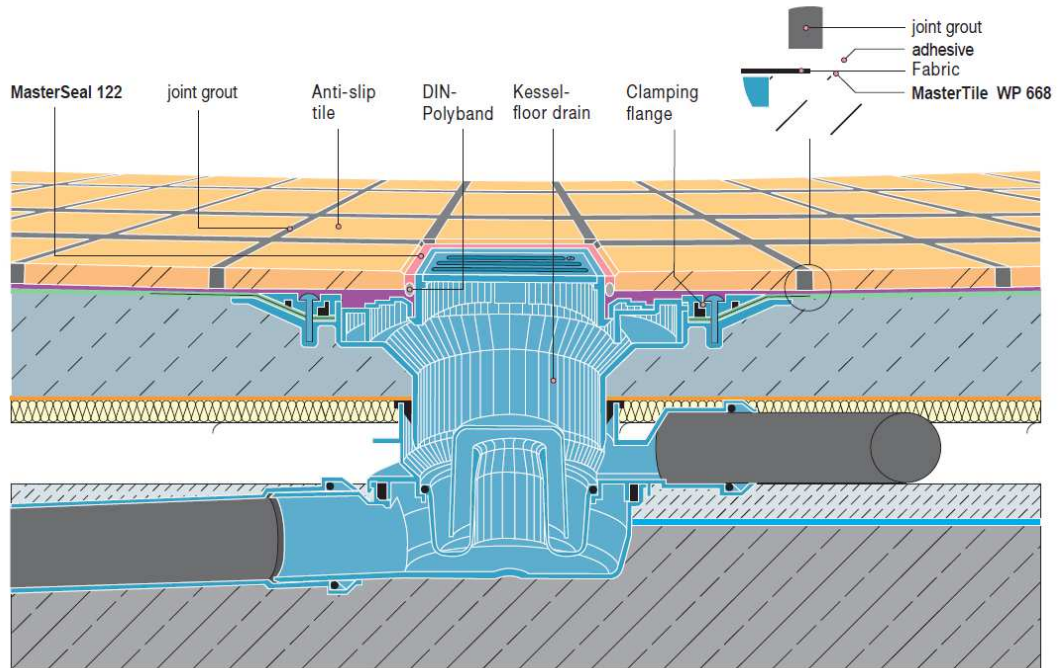
3. Fix **MasterTile WP Tape** with **MasterTile WP 668** (red) in corner joints and floor/wall junctions.



6. When the waterproofing **MasterTile WP 668** has cured tiles can be laid.

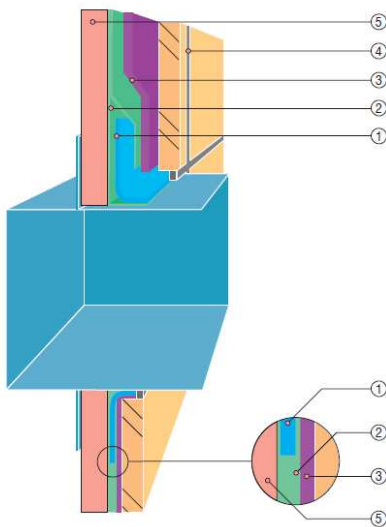
# MasterTile® WP 668

Detail: Waterproofing of a floor drain



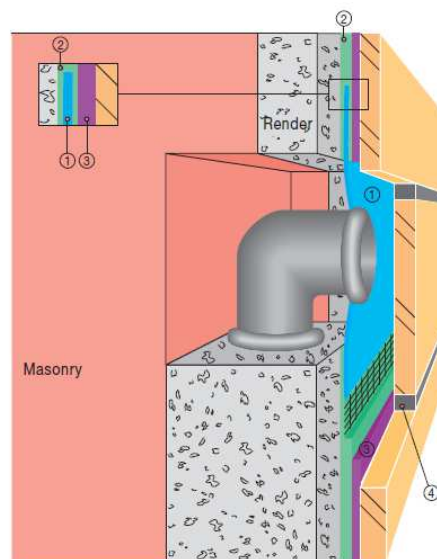
Detail: Installation of a waterproof wall-mounted housing for fittings (e.g. Hansa DAL)

- ① MasterTile WP Tape
- ② MasterTile WP 668
- ③ Tile Adhesive
- ④ Jointing Grout
- ⑤ Gypsum plasterboard



Detail: Pipe culvert / wall

- ① MasterTile WP Tape
- ② MasterTile WP 668
- ③ Tile adhesives on waterproofing layer MasterTile WP 668
- ④ Joint grout

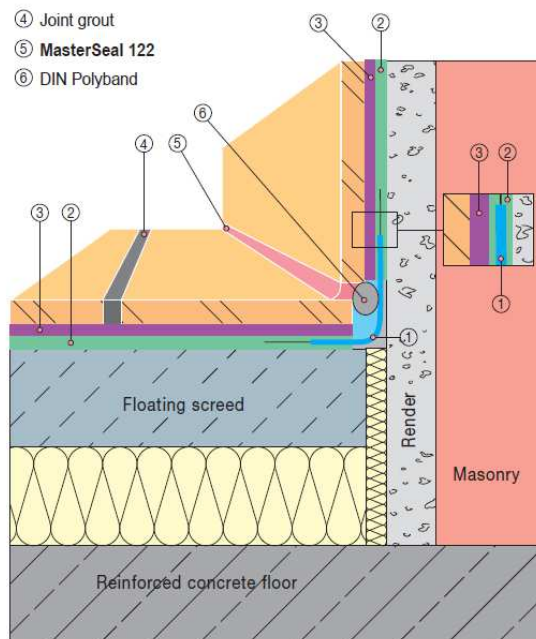


# MasterTile® WP 668

## Detail: Floor / wall connection

- ① MasterTile WP Tape
- ②: Waterproofing layer MasterTile WP 668
- ③ Tile adhesive: waterproofing layer MasterTile WP 668

- ④ Joint grout
- ⑤ MasterSeal 122
- ⑥ DIN Polyband



## PLEASE NOTE

- **MasterTile WP 668** is not recommended for outdoor use and waterproofing in swimming pools. For these purposes use the crack-bridging waterproofing slurry **MasterSeal 588**.
- Do not apply **MasterTile WP 668** at substrate temperatures below +5°C and above +40°C.
- The protective coating can be exposed to foot traffic after 2 hours at the earliest when applying two coats.
- To enable an easier control of the layer thickness it is recommended to apply the first coat of **MasterTile WP 668** in red and the second coat in grey. The first coat must not be visible.
- In-wall fittings which can be integrated into the waterproof protective coating

- **MasterTile WP 668** by means of **MasterTile WP Tape** is available from e.g. Hansa or DAL.
- The waterproofing gasket **MasterTile WP Tape** must waterproof around the pipe (not around the plug which will be removed later), otherwise the pipe must be extended beyond the waterproof area by inserting a spacer.
- To avoid acoustical bridges the connection joint at the edge of floating screeds must be free from mortar and waterproofing slurry. It is recommended to leave at least 10mm in horizontal and vertical direction at the wall/floor connection free from **MasterTile WP 668** (see detailed drawing). Possible contamination of the barrier strip should be thoroughly removed before inserting the waterproofing tape.
- Tools should be washed with water immediately after use. Once the product has cured it can only be removed by mechanical means.
- If the surrounding area is sensitive to moisture waterproofing must be applied also below and behind the shower base and bathtub.

## STORAGE & SHELF LIFE

Store under cover out of direct sunlight and protect from extremes of temperature. In tropical climates the product must be stored below +40°C.

Shelf life is 6 months when stored in dry conditions and protected from frost.

## GENERAL INFORMATION ON DISPERSION PRODUCTS

Do not allow dispersion to dry on the skin. Remove dried dispersion with soap and water. Protect eyes where there is risk from splashing. In case of contact with eyes thoroughly flush with water. If the eye irritation does not ease off within a few minutes seek prompt medical attention.



# MasterTile<sup>®</sup> WP 668

---

## NOTE

Field service, where provided, does not constitute supervisory responsibility. For additional information contact your local BASF representative.

BASF reserves the right to have the true cause of any difficulty determined by accepted test methods.

## QUALITY AND CARE

All products originating from BASF's Dubai, UAE facility are manufactured under a management system independently certified to conform to the requirements of the quality, environmental and occupational health & safety standards ISO 9001, ISO 14001 and ISO 45001.

\* Properties listed are based on laboratory controlled tests.

® = Registered trademark of the BASF-Group in many countries.

**BASF\_CC-UAE/MTile\_WP668\_10\_06/v5/11\_17**

## STATEMENT OF RESPONSIBILITY

The technical information and application advice given in this BASF publication are based on the present state of our best scientific and practical knowledge. As the information herein is of a general nature, no assumption can be made as to a product's suitability for a particular use or application and no warranty as to its accuracy, reliability or completeness either expressed or implied is given other than those required by law. The user is responsible for checking the suitability of products for their intended use.

## NOTE

Field service where provided does not constitute supervisory responsibility. Suggestions made by BASF either orally or in writing may be followed, modified or rejected by the owner, engineer or contractor since they, and not BASF, are responsible for carrying out procedures appropriate to a specific application.