

# MasterTile<sup>®</sup> WP Tape

Objekt 120mm x 50m  
Sealing Tape 200mm x 50m and 100mm x 50m  
Gasket 42.5mm x 42.5mm and 10mm x 10mm

Special waterproofing tapes / gasket systems for waterproof corner and perimeter joints, pipe culverts and floor drains

## DESCRIPTION

**MasterTile WP Tape** is a special rubber tape that is designed to reinforce and waterproof joints, corners, covers, angles, changes of plane, pipe penetrations and changes in material, as part of the **MasterTile WP 668** waterproofing system.

## APPLICATION

- For indoor and outdoor use.
- For walls and floors.
- For wet areas with non pressurised water such as showers, in residential buildings, hotels, old peoples homes and hospitals.
- For permanently wet areas with pressurised water such as swimming pools.
- For embedding in the waterproof coatings **MasterTile WP 668, MasterSeal 588**.
- For waterproofing according to
  - ZDB leaflet "Bonded waterproofing", edition 2005.
  - Building regulation list A part 2 no. 1.10 "Waterproofing substances to be applied in liquid condition directly under tiles.."

## FEATURES AND BENEFITS

- Special rubber tape.
- Crack-bridging, high security when cracks in the substrates form at a later stage.

- Waterproof and resistant to frost, all-purpose use indoors and out.
- Resistant to ageing, insensitive to environmental influences.
- Secure adhesion, bonding with the waterproofing products **MasterTile WP 668**.
- Resistant to limewater as well as chlorinated water, all-purpose use indoors and out as well as in chlorinated swimming pools.

## PREPARATION OF SUBSTRATE

The substrate must be sound, dry, even, clean and free of oil, grease and other bond-inhibiting residues. The requirements for substrate preparation for the product **MasterTile WP 668**.

## APPLICATION PROCEDURE

In the connection area floor/wall and/or wall/wall apply **MasterTile WP 668** in a width of approx. 10cm and/or 15cm by brush or trowel. Press **MasterTile WP 668** into the wet waterproofing material. Do not use sharp-edged tools!

When applying the waterproofing material to the entire area make sure that **MasterTile WP Tape** is fully covered.

## TECHNICAL DATA - MATERIAL

|                                                 |                            |
|-------------------------------------------------|----------------------------|
| Material base                                   | special rubber tape        |
| Components                                      | 1 part                     |
| Colour                                          | blue                       |
| Impermeability in combination with PCI Seccoral | up to head of water of 15m |
| Tear-out force extensibility diagonal           | >15 Mpa                    |
| Elongation at break extensibility diagonal      | >200%                      |
| Temperature resistance                          | -20°C to +80°C             |
| MasterTile WP 668                               | 50 m roll                  |

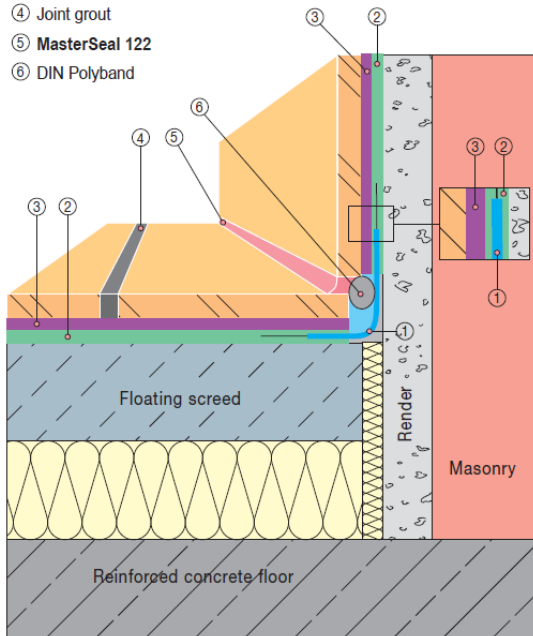
# MasterTile® WP Tape

## Examples

### MasterTile WP Tape in combination with MasterTile WP 668

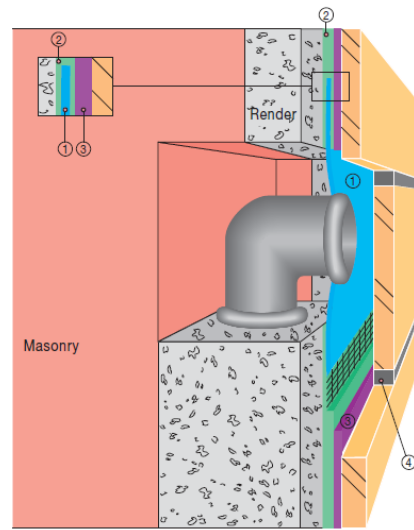
#### Detail: Floor / wall connection

- ① MasterTile WP Tape
- ②: Waterproofing layer MasterTile WP 668
- ③ Tile adhesive: waterproofing layer MasterTile WP 668
- ④ Joint grout
- ⑤ MasterSeal 122
- ⑥ DIN Polyband



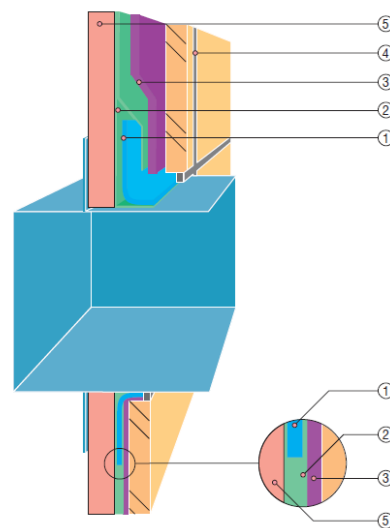
#### Detail: Pipe culvert / wall

- ① MasterTile WP Tape
- ② MasterTile WP 668
- ③ Tile adhesives on waterproofing layer MasterTile WP 668
- ④ Joint grout



#### Detail: Installation of a waterproof wall-mounted housing for fittings (e.g. Hansa DAL)

- ① MasterTile WP Tape
- ② MasterTile WP 668
- ③ Tile Adhesive
- ④ Jointing Grout
- ⑤ Gypsum plasterboard

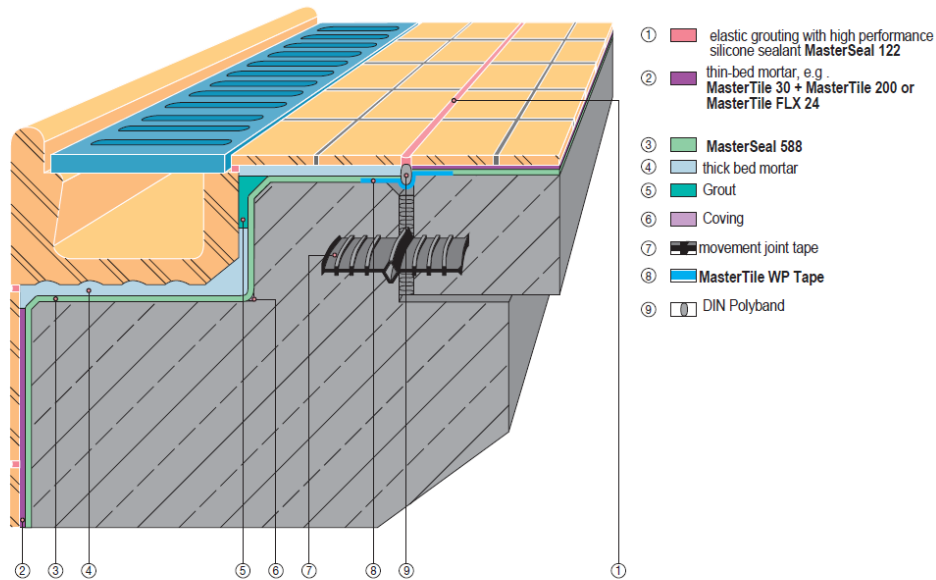


# MasterTile® WP Tape

## Examples

### MasterTile WP Tape in combination with MasterSeal 588

Waterproofing the heads of swimming pools



- ① elastic grouting with high performance silicone sealant MasterSeal 122
- ② thin-bed mortar, e.g. MasterTile 30 + MasterTile 200 or MasterTile FLX 24
- ③ MasterSeal 588
- ④ thick bed mortar
- ⑤ Grout
- ⑥ Coving
- ⑦ movement joint tape
- ⑧ MasterTile WP Tape
- ⑨ DIN Polyband

## NOTE

Field service, where provided, does not constitute supervisory responsibility. For additional information contact your local BASF representative.

BASF reserves the right to have the true cause of any difficulty determined by accepted test methods.

## QUALITY AND CARE

All products originating from BASF's Dubai, UAE facility are manufactured under a management system independently certified to conform to the requirements of the quality, environmental and occupational health & safety standards ISO 9001, ISO 14001 and OHSAS 18001.

\* Properties listed are based on laboratory controlled tests.

® = Registered trademark of the BASF-Group in many countries.

BASF\_CC-UAE/Mtile\_WP\_Tape\_01\_09/v2/07\_16

## STATEMENT OF RESPONSIBILITY

The technical information and application advice given in this BASF publication are based on the present state of our best scientific and practical knowledge. As the information herein is of a general nature, no assumption can be made as to a product's suitability for a particular use or application and no warranty as to its accuracy, reliability or completeness either expressed or implied is given other than those required by law. The user is responsible for checking the suitability of products for their intended use.

## NOTE

Field service where provided does not constitute supervisory responsibility. Suggestions made by BASF either orally or in writing may be followed, modified or rejected by the owner, engineer or contractor since they, and not BASF, are responsible for carrying out procedures appropriate to a specific application.