

# MasterSeal® SL 180

## Polyester traffic-detector loop sealant

FORMERLY GOLD LABEL ALL SEASON LOOP SEALANT

### PACKAGING

3.5 gallon (30 lb [13.5 kg]) plastic pails, containing:

- 1 gallon (3.8 L) liquid
- 20 lbs (9 kg) powder
- 1/2 oz tube of Flexgard Retarder
- 100 g bottle of Fast Flex Accelerator sold separately

### COLOR

Gray

### YIELD

See chart to the right

### STORAGE

Store and transport in unopened containers at 60 to 80° F (16 to 27° C) in clean, dry conditions.

### SHELF LIFE

1 year when properly stored.

### VOC CONTENT

347 g/L less water and exempt solvents

### DESCRIPTION

MasterSeal SL 180 is a flowable polyester sealant. It is designed for the traffic control industry to embed and protect detector loop wire for traffic signals and parking gates.

### PRODUCT HIGHLIGHTS

- Cures quickly, helping to minimize traffic disruption
- Cured sealant is flexible to accommodate normal movement in concrete or asphalt
- Variable mix ratio allows applicator to mix to desired consistency
- Flowable to ensure loop wire is totally encapsulated
- Freeze/thaw tolerance allows sealant to be used in subfreezing conditions
- Moisture tolerant so it can be applied to damp substrates

### APPLICATIONS

- For embedding detector loop wire for traffic signals and parking gates
- Interior or exterior
- Concrete and masonry
- Asphalt

### HOW TO APPLY

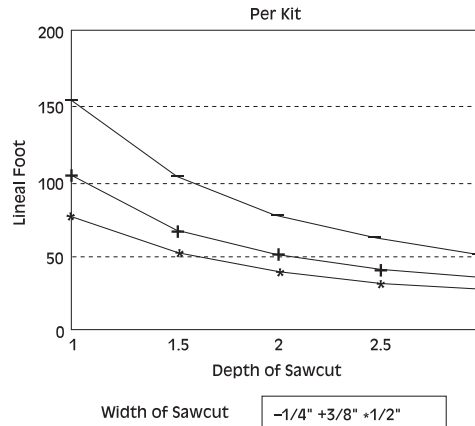
#### MIXING

1. Gradually add the powder to the liquid resin in a clean container, preferably plastic. Use the full 20 lbs (9 kg) of powder and mix with the 1 gallon (3.8 L) of resin supplied. Extra resin (up to an additional gallon) may be added to meet job requirements. Additional powder may also be added for variable consistency.
2. Stir constantly to achieve a uniform consistency. For best results, use a mechanical mixer.
3. To extend the pot life, mix in the tube of Flexgard provided with each kit.
4. To accelerate cure time, mix in 1/2 bottle (50 g) for application below 35° F (2° C).
5. Pre-condition material to 50–75° F before use.

#### APPLICATION

1. Saw cut the joint to desired dimensions.
2. Clear sawcut of water and debris using oil-free compressed air.
3. Install the detector loop wire.
4. Slowly pour MasterSeal SL 180 into the sawcut, allowing the sealant to flow and encapsulate detector wire.

### YIELD



**Technical Data**

**Composition**

MasterSeal SL 180 is a self-leveling polyester sealant.

**Typical Properties**

PROPERTY	VALUE
<b>Pot life</b> , min, at 77° F (25° C)	10 – 15
<b>With Flexgard</b>	30 – 40
<b>Initial cure</b> , min, at 77° F (25° C)	20
<b>Cure with Flexgard</b>	45

**Cold Weather Application with 50 g Fast Flex Accelerator**

PROPERTY	VALUE
<b>Pot life</b> , min, at 35° F (2° C)	10
<b>Initial cure</b> , min, at 35° F (2° C)	10 – 15

Do not use Fast Flex Accelerator above 35° F (2° C).

**Test Data**

PROPERTY	RESULTS	TEST METHOD
<b>Viscosity</b> , cps, at 78° F (26° C)	6,500	ASTM Brookfield Model RVT #3 at 10 rpm
<b>Hardness</b> , Shore D	50	ASTM D 2240
<b>Tensile strength</b> , psi (MPa)		ASTM D 638
2 to 1 powder / resin	395 (2.7)	
1 to 1 powder / resin	246 (1.7)	
<b>Elongation</b> , %		ASTM D 638
2 to 1 powder / resin	10	
1 to 1 powder / resin	20	
<b>Bond to concrete</b> , psi (MPa), direct tensile	300 (2.1) 100% concrete failure	ASTM D 4541
<b>Absorption</b> , %		ASTM D 570
Salt water (5% solution)	0.20	
Water	0.20	
Oil	0.02	
Gasoline	0.80	
<b>Linear shrinkage</b> , %	0.78	ASTM D 2566
<b>Arc resistance</b> , sec	181	ASTM D 495

All application and performance values are typical for the material, but may vary with test methods, conditions, and configurations.

**CLEANUP**

Clean up tools and equipment with lacquer thinner. Clean skin immediately with soap and water or industrial hand cleaner, not solvents.

**FOR BEST RESULTS**

- Can be applied below freezing temperatures provided substrate is frost and ice-free.
- Proper application is the responsibility of the user. Field visits by BASF personnel are for the purpose of making technical recommendations only and not for supervising or providing quality control on the jobsite.

**HEALTH, SAFETY AND ENVIRONMENTAL**

Read, understand and follow all Safety Data Sheets and product label information for this product prior to use. The SDS can be obtained by visiting [www.master-builders-solutions.basf.us](http://www.master-builders-solutions.basf.us), e-mailing your request to [basfbcst@basf.com](mailto:basfbcst@basf.com) or calling 1(800)433-9517. Use only as directed.

**For medical emergencies only, call ChemTrec® 1(800)424-9300.**

**LIMITED WARRANTY NOTICE**

BASF warrants this product to be free from manufacturing defects and to meet the technical properties on the current Technical Data Guide, if used as directed within shelf life. Satisfactory results depend not only on quality products but also upon many factors beyond our control. BASF MAKES NO OTHER WARRANTY OR GUARANTEE, EXPRESS OR IMPLIED, INCLUDING WARRANTIES OF MERCHANTABILITY OR FITNESS FOR A PARTICULAR PURPOSE WITH RESPECT TO ITS PRODUCTS. The sole and exclusive remedy of Purchaser for any claim concerning this product, including but not limited to, claims alleging breach of warranty, negligence, strict liability or otherwise, is the replacement of product or refund of the purchase price, at the sole option of BASF. Any claims concerning this product must be received in writing within one (1) year from the date of shipment and any claims not presented within that period are waived by Purchaser. BASF WILL NOT BE RESPONSIBLE FOR ANY SPECIAL, INCIDENTAL, CONSEQUENTIAL (INCLUDING LOST PROFITS) OR PUNITIVE DAMAGES OF ANY KIND.

Purchaser must determine the suitability of the products for the intended use and assumes all risks and liabilities in connection therewith. This information and all further technical advice are based on BASF's present knowledge and experience. However, BASF assumes no liability for providing such information and advice including the extent to which such information and advice may relate to existing third party intellectual property rights, especially patent rights, nor shall any legal relationship be created by or arise from the provision of such information and advice. BASF reserves the right to make any changes according to technological progress or further developments. The Purchaser of the Product(s) must test the product(s) for suitability for the intended application and purpose before proceeding with a full application of the product(s). Performance of the product described herein should be verified by testing and carried out by qualified experts.

