

Project:

Adcock Ingram Critical Care Facility

Location:

Aeroton, South Africa

Project completed:

2015

Owner/s:

Adcock Ingram

Applicator/Contractor:

Southey Contracting

Designer/Architect/Specifier:

Adcock Ingram

Market sector:

Performance Flooring,
Pharmaceutica

Products used & amounts:

Primer: MasterTop® 1200

Scraper Coat: MasterTop® 1210

Final Coat: MasterTop® 1210
MasterBrace® ADH 220

Safe floor for healthcare facilities

Adcock Ingram Critical Care facility – Aeroton, South Africa



Our reference in Aeroton (South Africa): Adcock Ingram Critical Care facility

The background

This project comprises the surface preparation and coating of floors in the Adcock Ingram packaging storage area. The floors of the area, which measured approximately 250 m2, needed to be durable, safe and hygienic.

In addition, the job needed to be completed over a weekend as it was due to be inspected for hygienic approval in preparation before bringing back into service. BASF proposed the use of MasterTop 1210 light grey, applied 2 mm thick.

The challenge

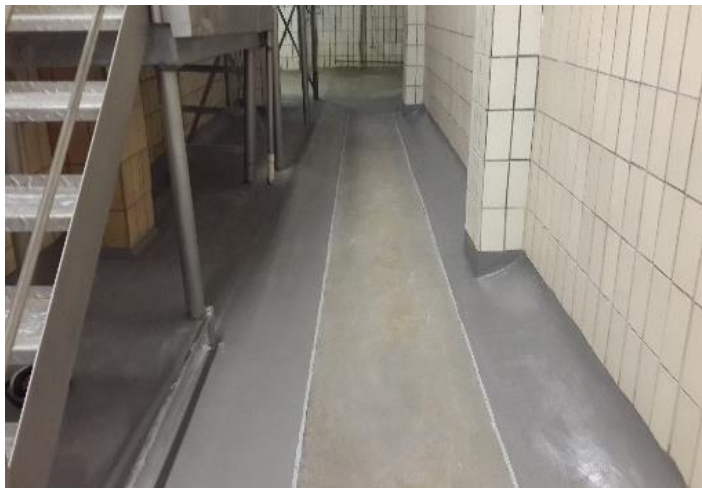
- Seamless floor protection
- Smooth finish
- Good wear and abrasion resistance
- Hygienic
- High gloss appearance
- Impermeable protection against liquid spills
- Good general chemical resistance
- Limited maintenance
- Cost effective

Contact

BASF Construction Chemicals UAE LLC
Tel : +971 4-8090800, Fax : +971 4-8851002
www.master-builders-solutions.basf.ae

Safe floor for healthcare facilities

Adcock Ingram Critical Care facility – Aeroton, South Africa



Our reference in Aeroton (South Africa): Adcock Ingram Critical Care facility

Our solution

The client was satisfied with the performance of BASF products, the implementation, the follow-up and especially with the smooth, high gloss finish.

Based on the success of this installation, BASF, together with the BASF approved MasterTop 1210 applicator, Southey Contracting, has been asked to provide further flooring solutions in other high care areas.

- BASF provided the technical and after sales support
- BASF provided the total solution for the client Industry

The customer's benefit

Errit grinders were used to remove the surface cement laitance, smooth out the surface and expose the tips of the underlying aggregate. The surface was vacuumed clean and a primer coat of MasterTop 1200 twin pack, solvent free epoxy primer, was applied at a coverage rate of 40 m² per 12.4 kg kit. The primer was allowed to cure overnight and the following morning was checked for pinholes. The holes were filled with MasterBrace ADH 220 and smoothed off. A scraper coat of MasterTop 1210 light grey was then applied over the entire floor to even out irregularities and ensure a complete sealing of the floor. This was allowed to cure overnight.

The following morning the entire area was given a light grind to remove imperfections, vacuumed cleaned and solvent wiped with acetone to remove any surface contaminants. The solvent was allowed to flash off and the final coat of MasterTop 1210 light grey was applied to give a DFT of 1mm.

Projects facts at a glance (max. 800 characters)

- Fast, expert installation
- Will not support bacterial growth
- Monolithic - minimizes joints
- Hygienic and safe
- Easy to clean
- High mechanical strength
- Abrasion resistant
- Good chemical resistance
- Non tainting

Master Builders Solutions from BASF

The Master Builders Solutions brand expresses BASF's expertise in providing customized chemical solutions for new construction, maintenance, repair and restoration of structures.

Master Builders Solutions is built on the experience gained from more than a century in the construction industry. At the core of the Master Builders Solutions brand is the combined know-how and experience of a global community of BASF construction experts, who connect with you to solve all of your construction challenges.

Further information is available at:

www.master-builders-solutions.basf.co.za