

# MasterSeal Balcony 1336

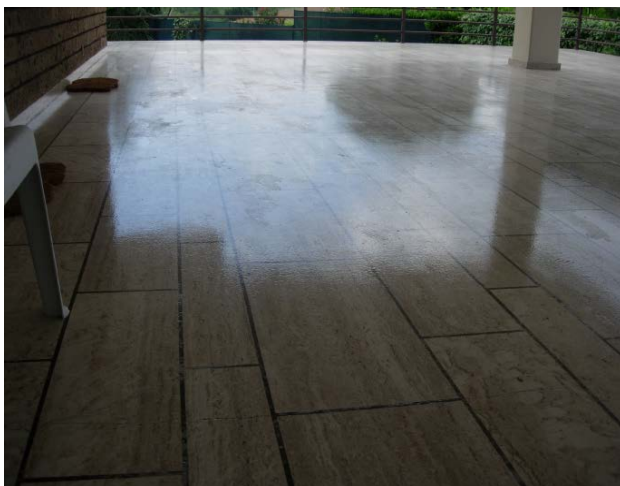
Continuous elastic cladding, waterproofing and protective for tiled and concrete balconies.

## DEFINITION OF THE MATERIAL

MasterSeal Balcony 1336 is a continuous, low thickness (0.2 -0.3 mm) waterproofing system made with a transparent hydrosetting single-component elastic polyurethane resin called MasterSeal M 251, applied on MasterSeal P 682 (single-component silane primer specific for ceramic surfaces) or on MasterSeal P 683 (single-component polyurethane primer specific for cement-based surfaces).

## MAIN FIELDS OF APPLICATION

MasterSeal Balcony 1336 is used for the continuous protection - waterproofing of tile, concrete balconies and walk-on terraces subject to minimum movement.



## CHARACTERISTICS

MasterSeal Balcony 1336 features the following unique characteristics:

- it is a continuous system (no joints or overlaps);
- tiles can be kept exposed;
- it is easy to lay and to clean;
- it withstands UV rays;
- top elastic and mechanical features in general;
- strong bonding with concrete, tiles and travertine;
- the balcony can be walked on after just 48 hours;
- with the addition of the PP filler, it is possible to obtain anti-slip properties.

## TYPICAL PERFORMANCE

Test method	Performance
Tensile strength DIN 53504	10 MPa
Elongation at break DIN 53504	200 %
Complete polymerisation	7 days
Abrasion resistance - grinding wheel CS 17 1000 g, 1000 revs ASTM D 4060	6.1 mg
Permeability to vapour DIN 52615	$\mu = 4000$

## CHOICE OF PRIMERS

Substrate	Primer
Tiles	MasterSeal P 682
Concrete	MasterSeal P 683

## THEORETICAL CONSUMPTION

Product	Kg/m <sup>2</sup>
MasterSeal P 682	0.02 - 0.05
MasterSeal P 683	0.2 - 0.4
MasterSeal M 251	0.5 - 0.6

## PACKAGES

Product	Package	Kg
MasterSeal P 682	Can	1
MasterSeal P 683	Can	10
MasterSeal M 251	Can	12

## STORAGE

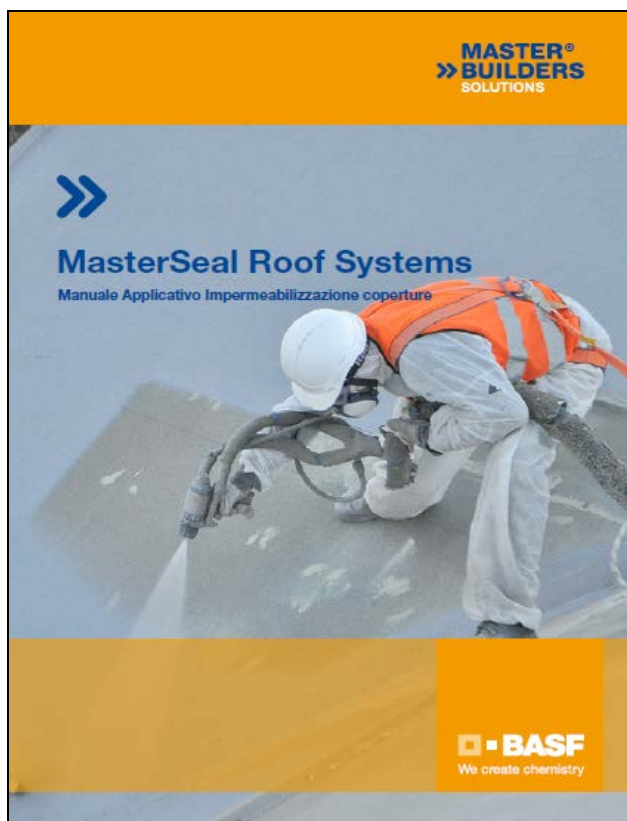
Store the material in the original containers, in a dry and covered place at a temperature between 15 and 25°C. Do not expose to direct sunlight.

# MasterSeal Balcony 1336

Continuous elastic cladding, waterproofing and protective for tiled and concrete balconies.

## APPLICATION SHEET

For every detail on correct application, always refer to the specific application guide "MasterSeal Roof Systems: Roof Waterproofing Application Manual".



## TEMPERATURE

It can be applied when the ambient temperature is between +5°C and +40°C.

## TILES

Assess whether the tiles are firmly anchored to the substrate, remove any tiles that are starting to detach and level the gap with MasterEmaco. Degrease the surface with high pressure water, degreasing detergents, alcohol or acetone. Remove any wax with suitable dewaxing agents. It is important that the surface be completely clean of any grease. The tile joints must be cleaned thoroughly with a metal brush to eliminate any impurities and plant growth.

## TRAVERTINE PROFILE

The travertine profile, if applicable, must have all plant growth, loose parts, dirt, removed by rubbing with metal brush and washing with a water-ammonia solution.

## CONCRETE OR PLASTER

Eliminate any parts that are coming detached, dust, dirt, grease and anything that can prevent the coating from adhering. With painted concrete, check compatibility between old and new coating. If they are not compatible, remove the old paint from the substrate through abrasion with metal brush or sandpaper. On new balconies with concrete floor slab, roughen the surface with sanding or brushing. Any macro cracks and/or macro defects need to be preventively repaired with MasterEmaco.

## PRIMER MasterSeal P 683

Blend the material for a few minutes with a drill at low speed then, on the duly-roughened, clean and dry surface, apply the primer with a short-pile roller or paintbrush.

### Dry-to-recoat times

10°C	3 – 48 hours
20°C	1 – 48 hours

## PRIMER MasterSeal P 682

Shake the package well to blend the material then, on the duly degreased, clean and dry surface, apply the primer with a dry cloth without leaving any threads on the surface. If a film with an oily-consistency develops on the surface of the tiles, this means too much primer has been applied. Remove the excess with a dry cloth.

### Dry-to-recoat times

10°C	10.5 – 5 hours
20°C	0.25 – 4 hours
30°C	0.25 – 4 hours

# MasterSeal Balcony 1336

Continuous elastic cladding, waterproofing and protective for tiled and concrete balconies.

## MasterSeal M 251

At least two coats with a short-pile roller, observing the dry-to-recoat times based on application temperature.

Dry-to-recoat times	
10°C	8 – 72 hours
20°C	6 – 48 hours
30°C	5 – 48 hours



To provide non-slip characteristics, in the second coat, add an amount of PP synthetic filler equal to 3% of the MasterSeal M 251 to the mixture.

## VERTICAL APPLICATION

The material must be applied vertically on the reinforced cement or concrete building wall or railing. Clean the surface well as explained in the dedicated paragraph. Dilute MasterSeal M 251 by 5% - 10% with polyurethane thinner P 200. Brush-apply this system so as to soak the substrate and prepare it for future waterproofing, up to height of approximately 15 - 20 cm. When all of the solvent has evaporated, apply a 0.15 - 0.2 kg/m<sup>2</sup> coat of MasterSeal M 251 with a short-pile roller or paintbrush, always observing the dry-to-recoat times.

## WARNINGS

Do not apply on very deteriorated surfaces or with tiles that are coming detached. Do not apply on damp substrates (maximum tolerated humidity of 4%) or in excessively dry (R.H. < 30%) or excessively humid (R.H. > 90%) climatic conditions. Do not apply at temperatures over +35°C and below +5°C.

## DECLARATION OF PERFORMANCE (DoP) and CE MARKING

In compliance with European Regulations (EU No 305/2011 and EU No. 574/2014), the product features the CE marking according to EN 13813 and relative DoP (Declaration of Performance).



We create chemistry

# MasterSeal Balcony 1336

---

Continuous elastic cladding, waterproofing and protective for tiled and concrete balconies.

---

Since 16/12/1992, BASF Construction Chemicals Italia Spa has been operating under a Certified Quality System in compliance with UNI EN ISO 9001. Furthermore, the Environmental Management System is certified according to UNI EN ISO 14001 and the Safety Management System is certified according to OHSAS 18001. Environmental sustainability: Green Building Council Partner since 2009.

#### **BASF Construction Chemicals Italia Spa**

Via Vicinale delle Corti, 21 – 31100 Treviso – Italy

T +39 0422 429200 F +39 0422 421802

<http://www.master-builders-solutions.basf.it> e-mail: [infomac@basf.com](mailto:infomac@basf.com)

For more information contact the BASF Construction Chemicals Italia Spa Technician in your area.

Technical advice that may be provided verbally or in writing concerning the use and methods to apply our products reflect the current state of our scientific knowledge and practices and do not imply a guarantee and/or liability for the end result of the works when using our products. Therefore, the customer bears the sole responsibility of verifying the suitability of our products for the intended use and purpose.

This edition supersedes all previous ones.

March 2017